



**USASHADE<sup>®</sup>**

# WATERPROOF FABRIC



**INNOVATIVE SHADE  
DESIGN SOLUTIONS**



With three decades of experience, USA SHADE is the innovator and proven industry leader in fabric shade structure design and technology. We deliver the best shade structure for a vast range of markets and applications.

**USA SHADE offers various fabrics to fit your shade structure needs including Waterproof.** Safeguard your assets against extreme weather with high strength coverage. These sustainable membranes include Novashield®, PVC and PTFE which have the capability to withstand heavier loads. Partner with USA SHADE and enjoy the benefits of Waterproof coverage.

**RAIN OR SHINE, WE HAVE YOU COVERED!**



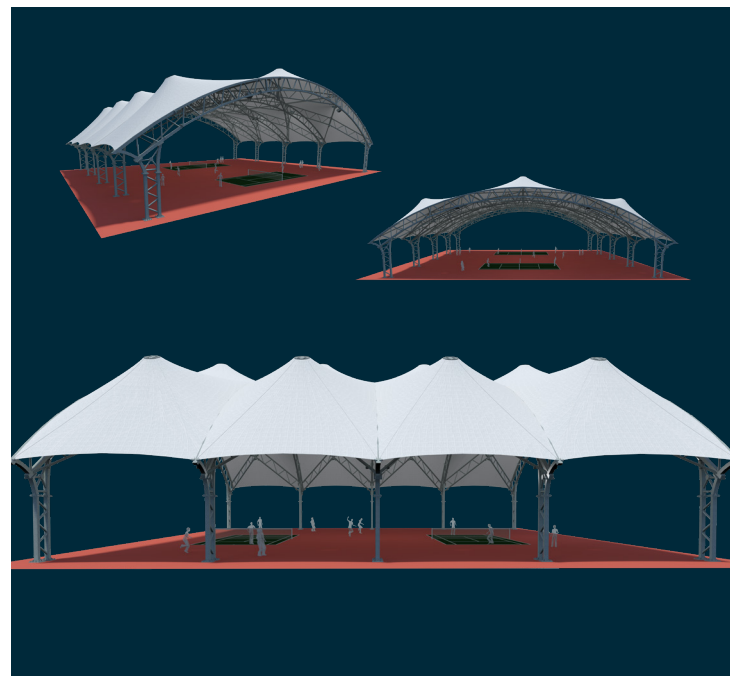
## STEP 1

Reach out to USA SHADE at [WPIinquiries@usa-shade.com](mailto:WPIinquiries@usa-shade.com) to get started on your Waterproof shade concept.



## STEP 2 - DESIGN PROCESS

- Concept Development
- Renderings and Visualizations
- Preliminary Analysis
- Feasibility Study



## STEP 3 - PRODUCTION PROCESS

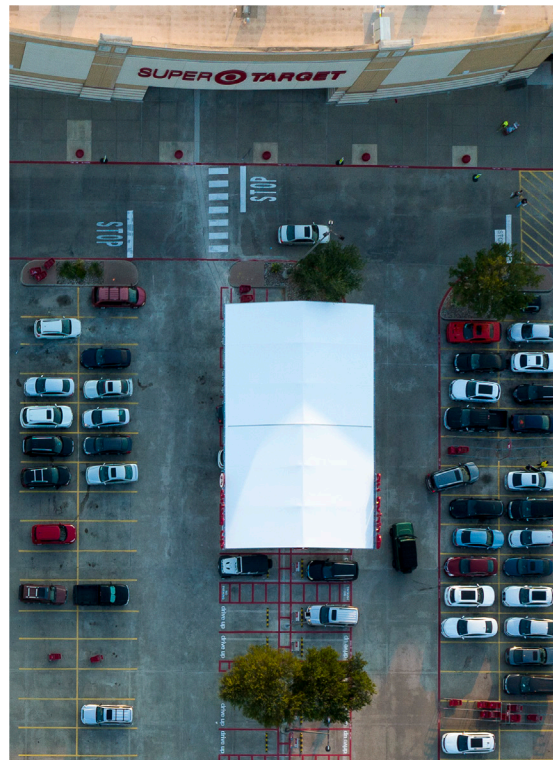
- Final Analysis
- Steel Fabrication
- Patterning
- Installation



## STEP 4 - FOLLOW-UP

USA SHADE will stay in contact with you throughout the lifecycle of the project, making sure you are aware of the progress and tying up any loose ends once complete.





## CHOOSE THE BEST WATERPROOF MEMBRANE FOR YOUR PROJECT

### NOVASHIELD®

The most cost-efficient option for temporary and permanent structures

Fire resistant - NFPA 701, ASTM E84

15+ year lifespan

Several color and weight options available

Counts toward LEED credits

Cradle to Cradle Bronze level certified

### PVC

A highly customizable option for temporary and permanent structures

Fire resistant - NFPA 701, ASTM E84, Class C

20+ year lifespan

Available in a variety of colors, weights, and textures

Recyclable

Self-cleaning types available

### PTFE

Extremely durable and tolerant with maximum flexibility for permanent structures

Non-combustible Class A

25+ year lifespan

Available in white only

Self-cleaning

